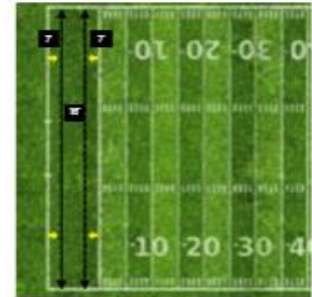


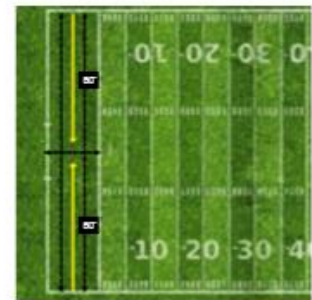
## Step 1:

String lines for the top and bottom of the letters. Measure 7 feet from the goal line into the end zone and 7 feet from the back of the end-zone towards the middle. Pull a string line across the width of the end-zone at each point. This will leave 16' in between the strings where your letters will be placed.



## Step 2:

Find the middle of the end-zone. Pull another string line from the goal post to the goal line. This is your measurement for the center of the end-zone.



## Step 3:

Space out your letters. If you have an odd number of letters the middle letter will be in line with the goal post. If you have an even number of letters, measure off the string line (both ways) 4 to 5 feet. This will become the edge of your letter. Continue spacing until all letters are evenly spaced along the string line.



## Step 4:

Paint the letters. The first application of the letters during the season will typically use more paint, up to two coats. Here is what we recommend for touch-ups throughout the season: If you are using bulk paint, plan on 1 gallon of diluted field marking paint (or flat exterior latex) for every 100 square feet or approximately 1 gallon per letter. If you are using aerosol paint plan on approximately 4 cans of aerosol paint per letter.



Send us a picture of your awesome end zone!

## Notes:

- The total width of the end zone is 160' and the depth is 30'.
- The 16' height of the letter is measured from the actual cut letter, not the top/bottom of the plastic.
- Letters are 16' tall and most are 10' wide except the following: W is 11', R, P and B are 9.5', S is 9', I is 2.5'
- It looks best if there is 8 to 10 feet between letters, but no more than 16 feet between letters.